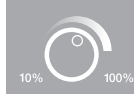
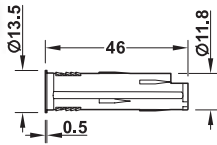


# Sensor switches

## Häfele Loox dimmer, modular – automatic on/off switching

WITH TOUCH/  
TOUCHLESS



- > Material/colour: Plastic, silver coloured
- > Degree of protection: IP20
- > Power consumption: ≤0.3 W
- > Drill hole Ø: 12 mm
- > Supplied with: 1 dimmer

	Sensor range	Cat. No.
With touch	–	833.89.058
Touchless	0–60 mm	833.89.126

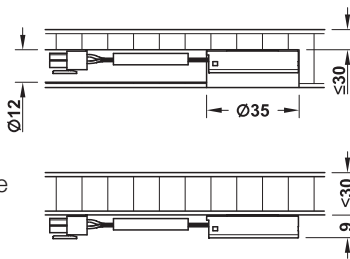
**+** Please order lead with snap-in connector for modular switches driver separately. Length 2 m: Cat. No. 833.89.142. See page 91

**!** Dimming value is stored without the need for voltage supply (memory function)

## Häfele Loox capacitive switch/dimmer, modular – touchless on/off switching and dimming



This completely invisible operating solution opens up completely new possibilities in continuously adjustable light control.



- > Manual operation (proximity sensor), memory function
- > Concealed installation in wood, glass or stone (not in metalliferous materials) at a maximum depth of 30 mm
- > For screw fixing or recess mounting (drill hole Ø 35 mm)
- > A distance of min. 500 mm to electromagnetic fields (power lines, microwave) must be adhered to.

- > Material/colour: Plastic, silver coloured
- > Diameter: 35 mm
- > Height: 10 mm
- > Degree of protection: IP20
- > Power consumption: ≤1 W
- > Supplied with: 1 switch

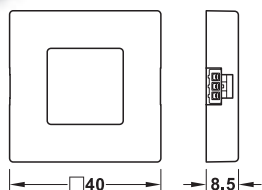
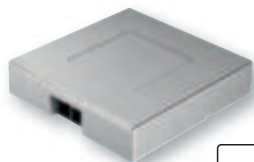
	Cat. No.
Capacitive switch/dimmer, modular	833.89.133

**+** Please order lead with snap-in connector for modular switches driver separately. Length 2 m: Cat. No. 833.89.142. See page 91

## Sensor switches

### Häfele Loox Sensor switch, surface mounted modular – touchless, soft on/off switching

TOUCHLESS



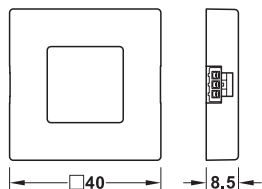
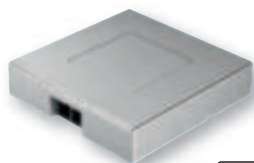
- > Material/colour: Plastic, silver coloured
- > Dim. (L x W x H): 40 x 40 x 8.5 mm
- > Degree of protection: IP20
- > Sensor range: 0–80 mm
- > Power consumption: ≤0.3 W
- > Supplied with: 1 switch with fixing material

	Cat. No.
Sensor switch, surface mounted modular	<b>833.89.136</b>

**+** Please order lead with snap-in connector for modular switches driver separately. Length 2 m: Cat. No. 833.89.142. See page 91

**!** On/off state is stored without the need for power supply (memory function).

### Häfele Loox Door sensor switch, surface mounted modular – soft on/off switching



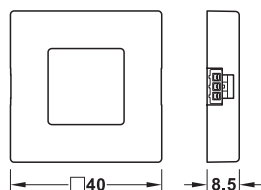
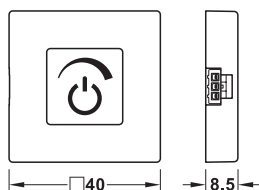
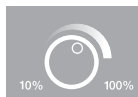
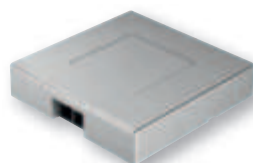
- > Material/colour: Plastic, silver coloured
- > Dim. (L x W x H): 40 x 40 x 8.5 mm
- > Degree of protection: IP20
- > Sensor range: 0–100 mm
- > Power consumption: ≤0.3 W
- > Supplied with: 1 switch with fixing material

	Cat. No.
Door sensor switch, surface mounted	<b>833.89.137</b>

**+** Please order lead with snap-in connector for modular switches driver separately. Length 2 m: Cat. No. 833.89.142. See page 91

### Häfele Loox Dimmer, surface mounted modular – soft on/off switching and dimming

WITH TOUCH/  
TOUCHLESS



- > Material/colour: Plastic, silver coloured
- > Dim. (L x W x H): 40 x 40 x 8.5 mm
- > Degree of protection: IP20
- > Sensor range: 0–100 mm
- > Power consumption: ≤0.3 W
- > Supplied with: 1 switch with fixing material

	Sensor range	Cat. No.
With touch	–	<b>833.89.134</b>
Touchless	0–80 mm	<b>833.89.135</b>

**+** Please order lead with snap-in connector for modular switches driver separately. Length 2 m: Cat. No. 833.89.142. See page 91

**!** Dimming value is stored without the need for voltage supply (memory function)