

# CATania 3030 Aluminium-Profile

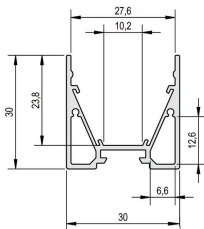
- high quality aluminium profile, anodised
- flexibly useable as surface-mounted or luminaire profile
- with two parallel hollow spaces which can be used as concealed cable channels
- increased light output through integrated reflector
- in combination with the optional reflector stripe the light output can be increased by up to 20 %
- in combination with an opal white cover and compatible LEDlight flex, a homogenous light distribution can be achieved
- RAL powder coating on request



Please refer to the notes on expansion and assembly at the end of the data sheet!

## ALUMINIUM PROFILE

	62399811	62399812	62399813	62399815
<b>Description</b>	CATania 3030 Profile			
<b>Length</b>	1000 mm	2010 mm	3020 mm	5030 mm
<b>Width</b>	30 mm			
<b>Height</b>	30 mm			
<b>Material</b>	Aluminium 6063			
<b>Finish</b>	anodised			
<b>Weight</b>	435 gr	870 gr	1305 gr	2175 gr



## INLAY

	62398841	62398842	62398843	62398845	62398881	62398882	62398883	62398885
<b>Description</b>	CATania insert profile, asymmetrical, for mounting the LEDlight flex family, combinable with GARliano covers, light deflection 14°				CATania insert profile, symmetrical, for mounting the LEDlight flex family, combinable with GARliano covers			
<b>Material</b>	Aluminium EN AW 6060							
<b>Finish</b>	anodised							
<b>Length</b>	1000 mm	2010 mm	3020 mm	5030 mm	1000 mm	2010 mm	3020 mm	5030 mm
<b>Width</b>	27,4 mm							
<b>Height</b>	17,91 mm				17,5 mm			
<b>Weight</b>	180 gr	360 gr	540 gr	900 gr	100 gr	200 gr	300 gr	500 gr



## COVER

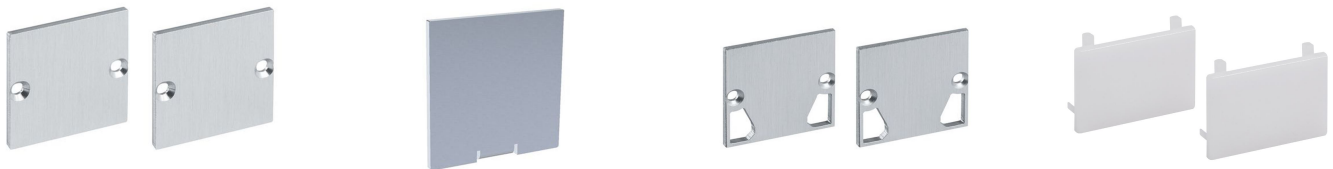
	62398851	62399821	62399841	62399851	62399861	62399871
<b>Description</b>	anodised aluminium cover	cover opal white, PMMA, for a homogenous and glare-free light distribution	high plastic cover, opal white, 180° for an all round homogenous light emission	cover nature, little light consumption and hiding technical view at the same time	cover clear, for the protection of the LED stripe	prisma cover to reduce the dazzling effect
<b>Material</b>	Aluminium	PMMA				
<b>Transmission in %</b>		77		84	91	
<b>Length</b>	1000 mm					
<b>Width</b>	27,4 mm		30 mm	27,4 mm		
<b>Height</b>	7,9 mm	7 mm	27,8 mm	7,9 mm		
<b>Weight</b>	130 gr	69 gr	155 gr	69 gr	75 gr	60 gr

For other lengths please replace the last digit of the article number by: 2 = 2.01m / 3 = 3.02m / 5 = 5.03m



## END CAPS

	62399827	62399828	62399829	62399846
<b>Description</b>	2x CATania end cap, standard, incl. 4 screws	2x CATania end cap with screwless visible surface	2x CATania end cap, cable duct, incl. 4 screws	2x CATania end caps frosted for plastic cover high 180°, compatible with 6239984#, thickness (excl. holding pins): 2mm
<b>Material</b>	Aluminium			
<b>Length</b>	2 mm			
<b>Width</b>	30 mm			
<b>Height</b>	30 mm			
<b>Weight</b>	10 gr		9 gr	2 gr



## MOUNTING CLIPS

	62399906	62399908
<b>Description</b>	holding set, 2x brackets + 2x screws, 306 stainless steel, suitable for GARgano, GARliano, CATania profile	1x vandal-proof mounting, aluminium, anodised, the alu-profile is fixated to the mounting with a hex key (M2x10), Dimensions: 40 mm x 27 mm x 5 mm
<b>Material</b>	304 stainless steel	Aluminium
<b>Length</b>	40 mm	
<b>Width</b>	13,5 mm	27 mm
<b>Height</b>	3 mm	5 mm
<b>Weight</b>	5 gr	13 gr



## ACCESSORIES

	62398801	62399816	62399817	62399919	62399936
<b>Description</b>	2x angle brackets for a 90° wall installation, aluminium, anodised, incl. 1 rounded head screw for attaching the brackets to the profile	reflectortape with a light reflection of >97%, sold by the metre, suitable for CATania profile	reflectortape with a light reflection of >97%, suitable for CATania profile	1x profile connector, incl. locking screws, suitable for GARGano, GARliano, CATania profile	1x profile 90°-connector, incl. 2 locking screws, suitable for GARGano, GARliano profile
<b>Length</b>	30 mm		10000 mm	45 mm	30,4 mm
<b>Width</b>	34 mm	15,5 mm		10 mm	30,4 mm
<b>Height</b>	30 mm	0,4 mm		2 mm	
<b>Weight</b>	22 gr	7 gr	49 gr	8 gr	9 gr
<b>Remarks</b>		Please note that the reflector tape has to be fitted on both sides of the stripe. That means for a 2m luminaire you need 4m reflector tape!			

	65400100	65400150
<b>Description</b>	suspension for ceiling installation (2x 150cm wire cable Ø 1mm with M4 thread, 2x suspension brackets)	suspension for ceiling installation (4 x 150cm wire cable Ø 1mm with M4 thread, 4 x suspension brackets) for profile lengths > 3m
<b>Length</b>	1500 mm	
<b>Weight</b>	71 gr	143 gr



Alle Aluminiumprofile und Abdeckungen unterliegen gewissen Längentoleranzen. Diese beträgt unabhängig von der Länge +20/-0 mm, d. h. ein Profil hat min. die angegebene Länge, kann aber bis zu 20 mm länger sein.

Benötigen Sie eine exakte Länge, geben Sie dies bitte bei der Bestellung an (über Artikelnummer 62397000).

Please note that the materials aluminum and PMMA can expand when the temperature changes vary greatly. With a temperature change of 20°C the expansion difference can be up to 1.2 mm per meter! This is no deficiency of the product but a normal physical process.

Installation note: If you directly install two aluminum profiles edge to edge (without end caps), please pay attention during installation, that you don't glue the LED strip directly over the joint, since the profiles at temperature fluctuations - especially at large lengths - will expand/contract (s. section 1) and then the LED tape may be damaged. At joints the LED strip has to be cut at the marked positions and reconnected with flexible solder bridges with corresponding expansion reserve (min. 5mm).