

# Pino HP Aluminium-Profile

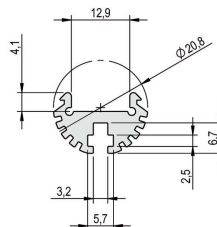
- high quality aluminium profile, anodised
- flexibly useable as surface-mounted or luminaire profile
- round design-build
- with integrated cooling body for LED strips with higher lumen and power output
- with half-round cover for a broad light distribution
- universal mounting via rear-side nut, suitable for M3 nuts
- in combination with an opal white cover and compatible LEDlight flex, a homogenous light distribution can be achieved
- RAL powder coating on request



Please refer to the notes on expansion and assembly at the end of the data sheet!

## ALUMINIUM PROFILE

	62399431	62399432	62399433	62399435
Length	1000 mm	2010 mm	3020 mm	5030 mm
Width	20,8 mm			
Height	13,2 mm			
Material	Aluminium 6063			
Finish	anodised			
Weight	320 gr	640 gr	960 gr	1600 gr



## COVER

	62389961	62396901	62397901	62398901
Description	cover clear, PMMA, 30° lens for a directed light focus	cover satined, PMMA, half-round, for a diffused light distribution and concealment of the technology	cover opal white, PMMA, half-round, for a homogenous and glare-free light distribution	cover clear, PMMA, half-round, for maximum light yield and protection of the LED strip
Material	PMMA			
Length	1000 mm			
Width	20 mm			
Height	10 mm			
Weight	96 gr	54 gr	56 gr	54 gr

For other lengths please replace the last digit of the article number by: 2 = 2.01m / 3 = 3.02m / 5 = 5.03m



## END CAPS

	62399446	62399447	62399448
<b>Description</b>	2x Pino end cap silver	2x Pino end cap clear	2x Pino end caps, aluminium, incl. screws
<b>Length</b>			2 mm
<b>Weight</b>	2 gr		4 gr



## MOUNTING CLIPS

	50990191	62399437
<b>Description</b>	2x mounting clips pivoted, incl. screws, suitable for profiles of the BARdolino family	2x mounting clips, 2 screws, suitable for profiles of the Pino family
<b>Material</b>	304 stainless steel	
<b>Length</b>	18,8 mm	
<b>Width</b>	32,3 mm	
<b>Height</b>	22,4 mm	
<b>Weight</b>	17 gr	5 gr



## ACCESSORIES

	62399438	62399487	62399488	62399489	65300160
<b>Description</b>	mounting clip, profile groove incl. mounting accessories, for mounting bracket and cantilever, suitable for Pino HP	mounting bracket standard, for mounting in ceiling and floor, incl. 2 screws and 2 dowels, distance to wall 15 mm	cantilever arm, for mounting on walls, incl. 2 screws and 2 dowels, distance to wall 65 mm	cantilever arm long, for mounting on walls, incl. 2 screws and 2 dowels, distance to wall 201 mm	suspension for ceiling installation (2x 150cm wire cable Ø 1mm with M3 thread, 2x suspension brackets)
<b>Material</b>		304 stainless steel			
<b>Length</b>	82 mm	73,7 mm	71,36 mm	206,3 mm	1500 mm
<b>Width</b>	11 mm	58 mm			
<b>Height</b>	17 mm	20,36 mm	55,5 mm	85,5 mm	
<b>Diameter</b>					1 mm
<b>Weight</b>	44 gr	75 gr	62 gr	159 gr	62 gr
<b>Remarks</b>		Mounting bracket V2A steel, nylon dowel, spacer sleeve brass nickel plated, screws, washers, snorkel washer, nut			



Alle Aluminiumprofile und Abdeckungen unterliegen gewissen Längentoleranzen. Diese beträgt unabhängig von der Länge +20/-0 mm, d. h. ein Profil hat min. die angegebene Länge, kann aber bis zu 20 mm länger sein.

Benötigen Sie eine exakte Länge, geben Sie dies bitte bei der Bestellung an (über Artikelnummer 62397000).

Please note that the materials aluminum and PMMA can expand when the temperature changes vary greatly. With a temperature change of 20°C the expansion difference can be up to 1.2 mm per meter! This is no deficiency of the product but a normal physical process.

Installation note: If you directly install two aluminum profiles edge to edge (without end caps), please pay attention during installation, that you don't glue the LED strip directly over the joint, since the profiles at temperature fluctuations - especially at large lengths - will expand/contract (s. section 1) and then the LED tape may be damaged. At joints the LED strip has to be cut at the marked positions and reconnected with flexible solder bridges with corresponding expansion reserve (min. 5mm).